

VCR4ODI Installation Guide

Release 4.0

February 2019



RedBridge

RedBridge Software BVBA
Kardinaal Mercierplein 2
2800 Mechelen
BELGIUM

Copyright © 2019 RedBridge Software BVBA

No part of this document may be reproduced or transmitted in any form or by any means, electronically or mechanically, for any purpose, without the express written permission of RedBridge Software BVBA.

Table of Contents

Chapter 1 - Introduction	1
Chapter 2 - Prerequisites.....	2
Chapter 3 - Installing VCR4ODI	4
Chapter 4 - VCR4ODI Profiles.....	7
Chapter 5 - Managing the License	12
Chapter 6 - Starting VCR4ODI.....	13
Chapter 7 - Uninstalling VCR4ODI	14

Introduction

The VCR4ODI connector enables the interaction between the ODI Repositories and the Version Control Repository (Subversion). It is used to commit ODI objects to the VCR and, vice versa, to restore objects from the VCR into ODI.

This document explains how to install the VCR4ODI connector.

For more information on how to use the connector, refer to the *VCR4ODI User Guide*.

2.1. Subversion Server

Operating System	Windows 7 or higher, all Linux flavors
Java	JRE 1.7 or above (JRE 1.7_45 is shipped with VCR4ODI)
Application Server	Apache Tomcat 6.x
Version Control Repository	Subversion 1.7.4
Application Lifecycle Management	IKAN ALM 5.6 and above
ODI Installation	ODI 11.1.1.6.x and ODI 11.1.1.7.x ODI 12.1.x

2.2. Subversion Client

In order to install and run *VCR4ODI*, you must first have installed the client version of ODI (ODI Studio) on the same workstation.

The following is needed:

- Read and write rights on a portion of the File System to store the temporary check-out from the Version System Repository
- Subversion must be locally accessible.
- Each developer must have a separate Subversion account. This is required because of the Subversion lock-unlock system.
- Each developer must use his/her own User Name to access both ODI and Subversion.
- Each developer must have his/her own local working copy. This working copy is a temporary directory, used to transfer objects between ODI and Subversion.
- ODI object names must be unique (regardless of the case) at the same level of the hierarchy (even though this is not a requirement for ODI).

For example:

Not allowed	RootProject Folder1 Folder1
Not allowed	RootProject Folder1 FOLDER1
Allowed	RootProject Folder1 Folder2

Installing VCR4ODI

Each ODI User needing *VCR4ODI*, must install the connector in his/her local environment.

The installation process consists of extracting the zip or tar.gz file.

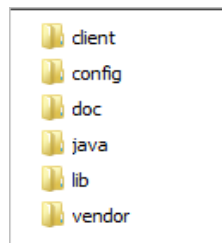
To complete the installation process, you will need the following information:

- the installation zip or tar.gz file
- the location of the ODI home directory.

1. Extract the zip or tar.gz file.

Note: *VCR4ODI* is shipped with a Java version so that the connector can be started immediately.

The following folders will be extracted:



Folder	Description
client	The <i>bin</i> folder inside this folder contains the <i>vcr4odi.bat</i> or <i>.sh</i> file, which launches the connector.
config	Contains the Log file, the configuration files (to connect ODI to the VCR) and the License file.
doc	Contains the documentation.
java	The Java installation shipped with VCR4ODI.
lib	Contains the core Java application.
vendor	Contains the external jars.

- All applications depend on the setting of the `%ODI_HOME%` variable in the `setEnv.bat` or `.sh` file. Therefore, you must first of all specify the ODI home directory.

2.1. Go to the `config` folder and open the `setEnv.bat` or `setEnv.sh` file using a text editor.

2.2. Specify the ODI and Oracle Home directories.

```







16 REM # VARIABLES DESCRIPTION
17 REM #
18 REM # The following variables can be changed to tune VRC4ODI configuration.
19 REM #
20 REM #   VCR4ODI_HOME
21 REM #       Installation directory of VRC4ODI software
22 REM #   VCR4ODI_INIT_HEAP
23 REM #       Initial java machine heap size used by VRC4ODI.
24 REM #   VCR4ODI_MAX_HEAP
25 REM #       Maximum java machine heap size used by VRC4ODI.
26 REM #   VCR4ODI_JAVA_HOME
27 REM #       Installation directory of the java virtual machine. Java 1.7 and above is necessary
28 REM #   ODI_HOME
29 REM #       Installation directory of ODI software
30 REM #
31
32 REM #
33 REM # VARIABLES
34 REM #
35
36 Specify the ODI and Oracle Home Directories
37 set ODI_HOME="C:/oracle/product/ODI_11117"
38 set ORACLE_HOME="C:/oracle/product/11.1.0/db_1"
39 set JPS_CONFIG="%ODI_HOME%/oracledi/client/odi/bin/jps-config.xml"
40

```

- Save and close the file.
- Go to the `client/bin` folder and execute the `vcr4odi.bat` or `vcr4odi.sh` file to start `VCR4ODI`. The `VCR4ODI` startup window will be displayed.



The following buttons are available:

Button	Explanation
	Used to create a new Profile definition. See Creating a New Profile on page 8.
	Used to copy an existing Profile definition. See Copying an Existing Profile on page 10.
	Used to modify an existing Profile definition. See Editing an Existing Profile on page 10.
	Used to delete a Profile definition. See Deleting an Existing Profile on page 11.
	Used to manage the license. See Managing the License on page 12..
	Used to start the connector. See Starting VCR4ODI on page 13..

5. If this is the first time you use the VCR4ODI connector, you first need to define a Profile. For more information, refer to the section [VCR4ODI Profiles](#) (page 7).
If you already defined a Profile, select it from the drop-down list and click the *Start* button.


VCR4ODI Profiles

Before you can start working with *VCR4ODI*, you must specify the configuration properties.

For more detailed information, refer to the following sections:

- [Creating a New Profile](#) (page 8)
- [Copying an Existing Profile](#) (page 10)
- [Editing an Existing Profile](#) (page 10)
- [Deleting an Existing Profile](#) (page 11)

4.1. Creating a New Profile

1. On the VCR4ODI startup window, click the  (Add New Profile) button. The following screen is displayed:

The screen is divided into three panels:

- the VCR4ODI profile parameters
 - the ODI parameters: all parameter necessary to connect to the master and to the repository,
 - the Subversion connection information
2. Provide a name for the new Profile.
 3. Update the ODI parameters as required.

Oracle Data Integrator Connection

Field	Meaning
User	The name of the ODI User.
Password	The password of the ODI User.

Database Connection (Master Repository)

Field	Meaning
User	The Schema name of the Master Repository.
Password	The Schema password of the Master Repository.
Driver Name	The class name of the jdbc driver used to connect to the ODI repository.
URL	The URL path of the Master Repository.

Work Repository


Field	Meaning
Work Repository	The name of the ODI Work Repository you want to connect to.

Note: All passwords will be encoded using the ODI *encode.bat* file that you can find under *%ODI_HOME%/oracledi/agent/bin*.

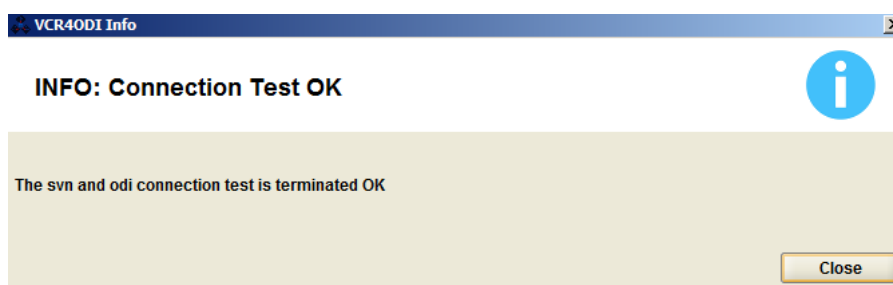
- Update the Subversion Connection parameters as required.

Field	Meaning
Repository URL	The URL path of the Subversion Repository.
User ID	The name of the Subversion User.
Password	The password of the Subversion User.
Working Copy	The path to the local working copy. This folder will be the starting point for checking out objects from the repository and for managing the comparison between ODI and Subversion. Important: each user should have his/her own local working repository.

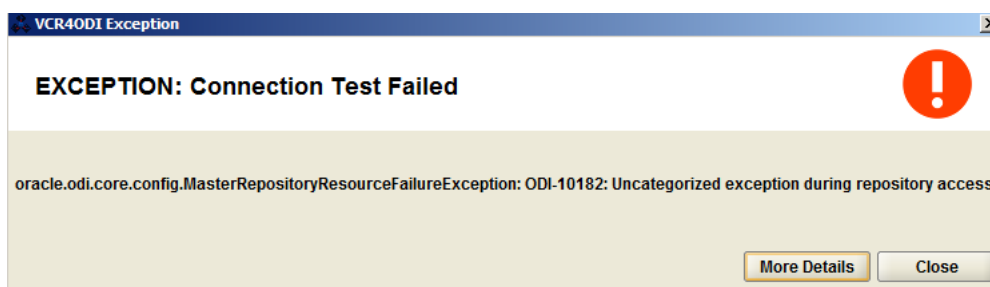
- Test the connection.

You can test whether the connection is working by clicking the  button.

If the test succeeds, the following message will be displayed:




If the test failed, an error message similar to the one below will be displayed.




You can click the *More Details* button for more information concerning the connection problems.

6. If all properties are set correctly, click the *OK* button to return to the startup window. The new profile will be automatically selected.
7. Click the *Start* button to start using the VCR4ODI connector. For more detailed information, refer to the *VCR4ODI User Guide*.


4.2. Editing an Existing Profile

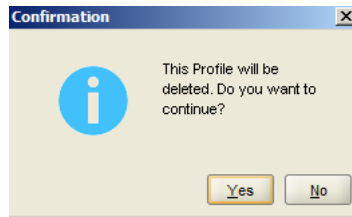
1. On the VCR4ODI startup window, click the  (*Edit Profile*) button. The *VCR4ODI Configuration Details* screen is displayed.
2. Modify the fields as required. For a detailed description of the different fields, refer to the section [Creating a New Profile](#) (page 8).
3. If all properties are set correctly, click the *OK* button to return to the startup window.
4. Click the *Start* button to start the VCR4ODI connector using the modified profile.

4.3. Copying an Existing Profile

1. On the VCR4ODI startup window, click the  (*Copy Profile*) button. The *VCR4ODI Configuration Details* screen is displayed.
2. Modify the profile name and the other fields as required. For a detailed description of the different fields, refer to the section [Creating a New Profile](#) (page 8).
3. If all properties are set correctly, click the *OK* button to return to the startup window.
4. Click the *Start* button to start the VCR4ODI connector using the new profile.

4.4. Deleting an Existing Profile

1. On the VCR4ODI startup window, click the  (*Delete Profile*) button.
The following window is displayed:

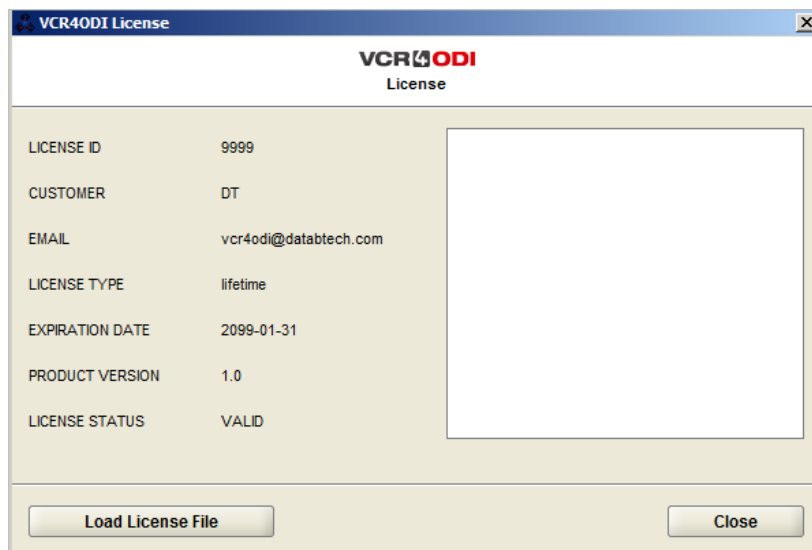


2. Confirm the deletion of the Profile.

Managing the License

1. In the upper left corner of the VCR4ODI startup window, click the  (License Manager) button.

The following screen is displayed.

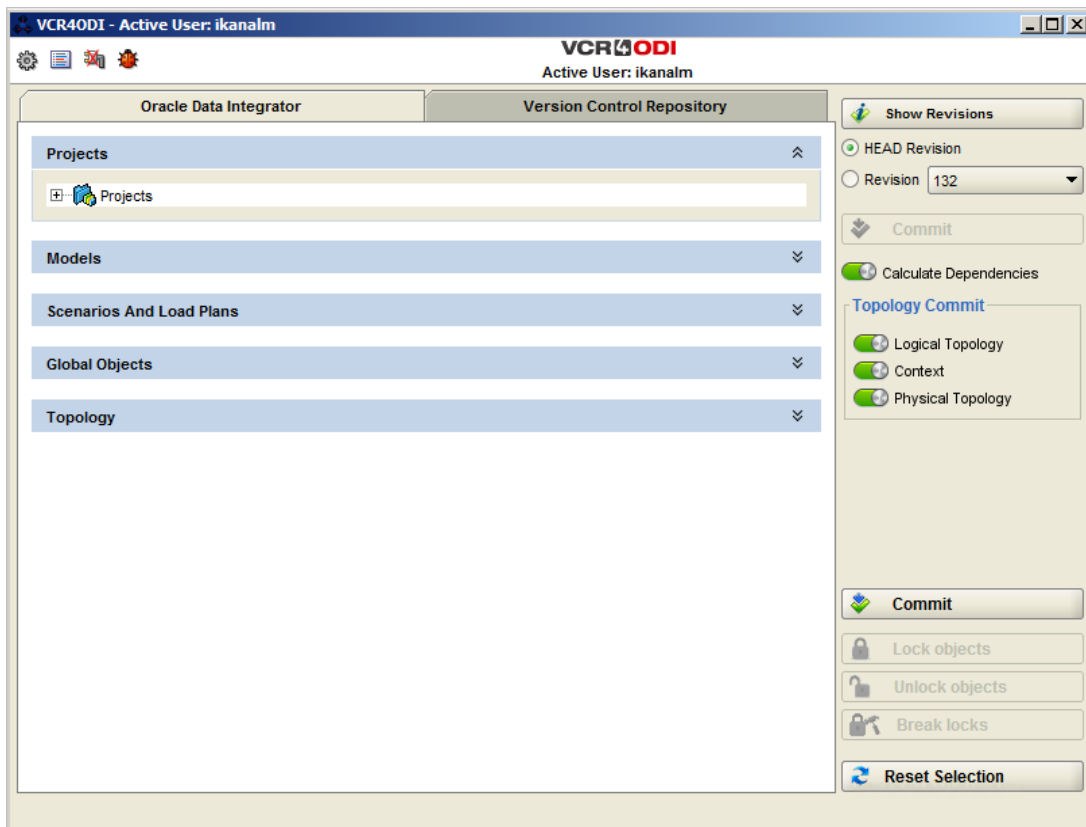


Here you can load a license file.

2. Click the *Load License File* button.
3. Select the appropriate .lic file.
4. Click the *Close* button to return to the startup window.

Starting VCR4ODI

On the VCR4ODI startup window, select the Profile you want to use and click the *Start* button. The following screen is displayed.



This screen contains two tab pages:

- The *Oracle Data Integrator* page
This tab page is used to commit modified ODI objects from a selected ODI Repository into Subversion.
- The *Version Control Repository* page
This page is used to restore objects from Subversion into the selected ODI Repository.

For more detailed information, refer to the *VCR4ODI User Guide*.

Uninstalling VCR4ODI

To completely uninstall VCR4ODI from your system, just delete the VCR4ODI installation folder.

IKAN ALM is developed by IKAN Development N.V., Belgium © Copyright 2019
The IKAN Development and IKAN ALM logos and names and all other IKAN product
or service names are trademarks of IKAN Development N.V.

Contact Information:
IKAN Development N.V.
Kardinaal Mercierplein 2
2800 Mechelen
BELGIUM
<http://www.ikanalm.com>
info@ikan.be

VCR4ODI is developed by D&T srl, Italy © Copyright 2019
The D&T logos and names and all other D&T product or service names are trademarks
of D&T srl.

Contact Information:
Database & Technology srl
Largo Promessi Sposi, 4
20142 Milano
Italy
<http://www.databtech.com>
dt.marketing@databtech.net

All other trademarks are property of their respective owners.