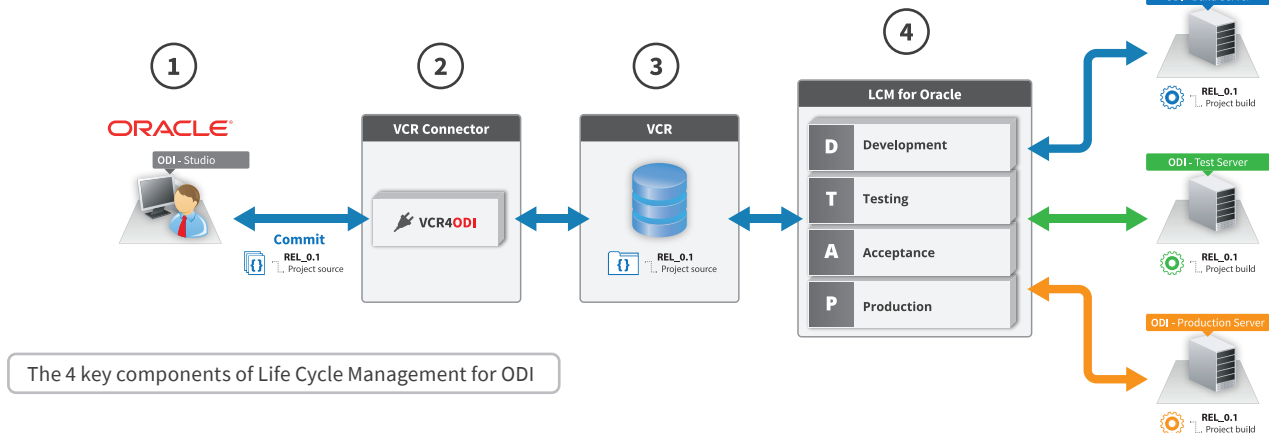


Data Sheet

Life Cycle Management for Oracle Data Integrator 11 & 12

RedBridge Software's Life Cycle Management (LCM) solution for Oracle Data Integrator combines the following elements: a versioning component, the ability to define a life cycle per project, build and deploy phases, and approval and notification services.

On top of that, it integrates with a number of issue tracking and versioning systems.



Our solution relies on the following 4 key components

ODI Studio ①

ODI Studio is being used for development. There will be no impact on the developers: they can continue to use ODI Studio the way they did before.

Once their development is done, they will use VCR4ODI to commit ODI objects to a version control repository or to restore objects from the version control repository to ODI.

VCR4ODI ②

VCR4ODI is an application that connects the ODI repositories with Subversion. The installation and usage of the connector is very simple and straight-forward: you just need to provide the connection information for the ODI repository and Subversion to get the connector up and running.

VCR4ODI will not only give you a view on your selected ODI Repositories but also on the Subversion repository.

One of the benefits of VCR4ODI is that you can work at the individual object level so that you do not need to commit

or restore a whole project. You can also lock objects to prevent others from working on the same objects you are working on.

Additionally, VCR4ODI takes into account all the dependencies between objects and automatically creates a new version for Projects, Models, Scenarios and global objects being used. Restoring those objects from a previous version can be done when needed.

Version Control Repository ③

A version control repository is used to store all versions of your code. The development environment can store objects by committing them to the versioning system and, on the other hand, they can check out or restore files from the VCR.

In addition, a VCR allows to do parallel development, to manage the releases of your software, to install former releases and to quickly find impacted code.

Data Sheet

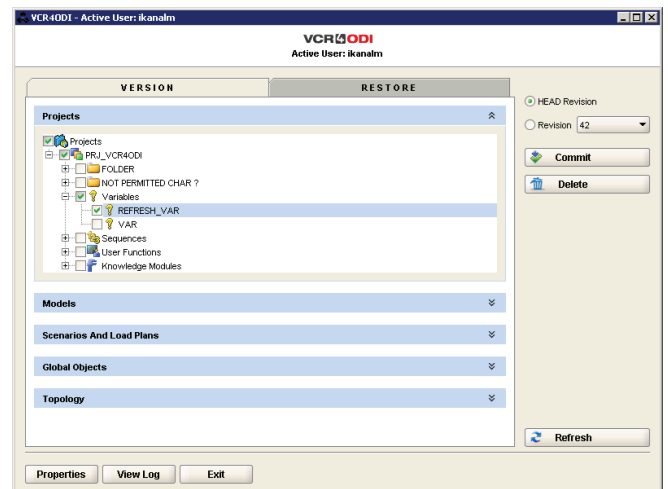
Life Cycle Management for Oracle Data Integrator 11 & 12

IKAN ALM ⁴

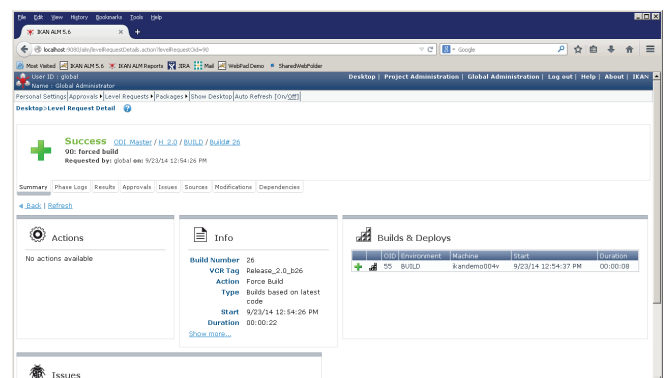
IKAN ALM offers a uniquely integrated web-based Life Cycle Management platform for both Agile and traditional software development. It combines Continuous Integration and Life Cycle Management, offering a single point of control, and delivering support for build and deploy processes, approval processes, release management and software life cycles. The added value for ODI is that IKAN ALM offers fully automated Build and Deploy processes for the selected ODI Repositories.

Key Benefits

- ✓ Use of standard versioning repositories
- ✓ Versioning integrated in ODI
- ✓ Support for concurrent development
- ✓ Smart, logical consistent check-in and check-out (commit and restore)
- ✓ Your own life cycle
- ✓ Fully automated build and deploy processes, including ODI Repository creation
- ✓ Roll-back facilities
- ✓ Integration with issue tracking systems
- ✓ Customizable



VCR4ODI interface



IKAN ALM interface

Contact us

Kardinaal Mercierplein 2
2800 Mechelen - Belgium
Phone: +32 15 797306
info@redbridgesoftware.com

3, Rue du Général De Gaulle
28700 Aunay-Sous-Auneau, France
Tél: +33 2 37 25 31 22
info@redbridgesoftware.com



[Join us on LinkedIn](#)

© Copyright 2019 RedBridge Software BVBA.

The RedBridge Software and RedBridge logos and names and all other RedBridge product or service names are trademarks of RedBridge Software BVBA. All other trademarks are property of their respective owners. No part of this document may be reproduced or transmitted in any form or by any means, electronically or mechanically, for any purpose, without the express written permission of RedBridge Software BVBA.

